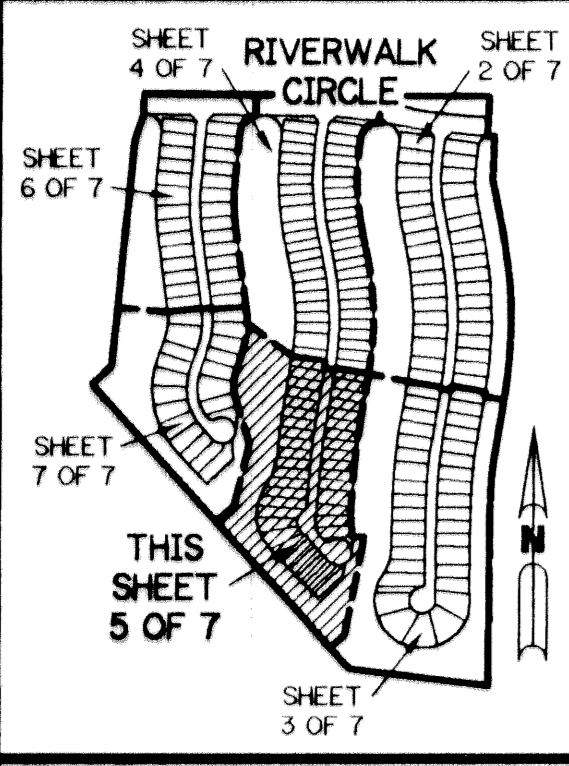


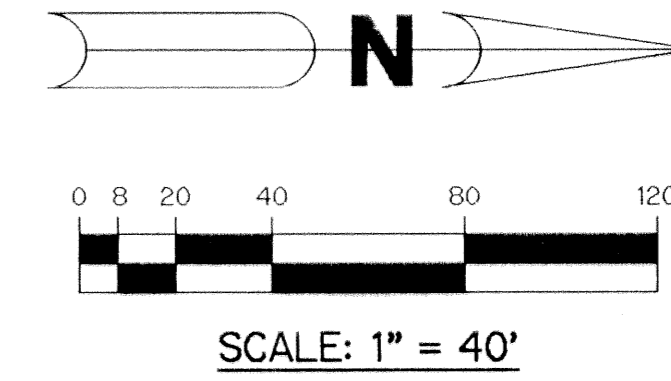
RIVERWALK - PLAT FOUR

A PARCEL OF LAND LYING IN SECTION 21, TOWNSHIP 43 SOUTH, RANGE 42 EAST, CITY OF WEST PALM BEACH, PALM BEACH COUNTY, FLORIDA.

SHEET 5 OF 7 JANUARY, 1997

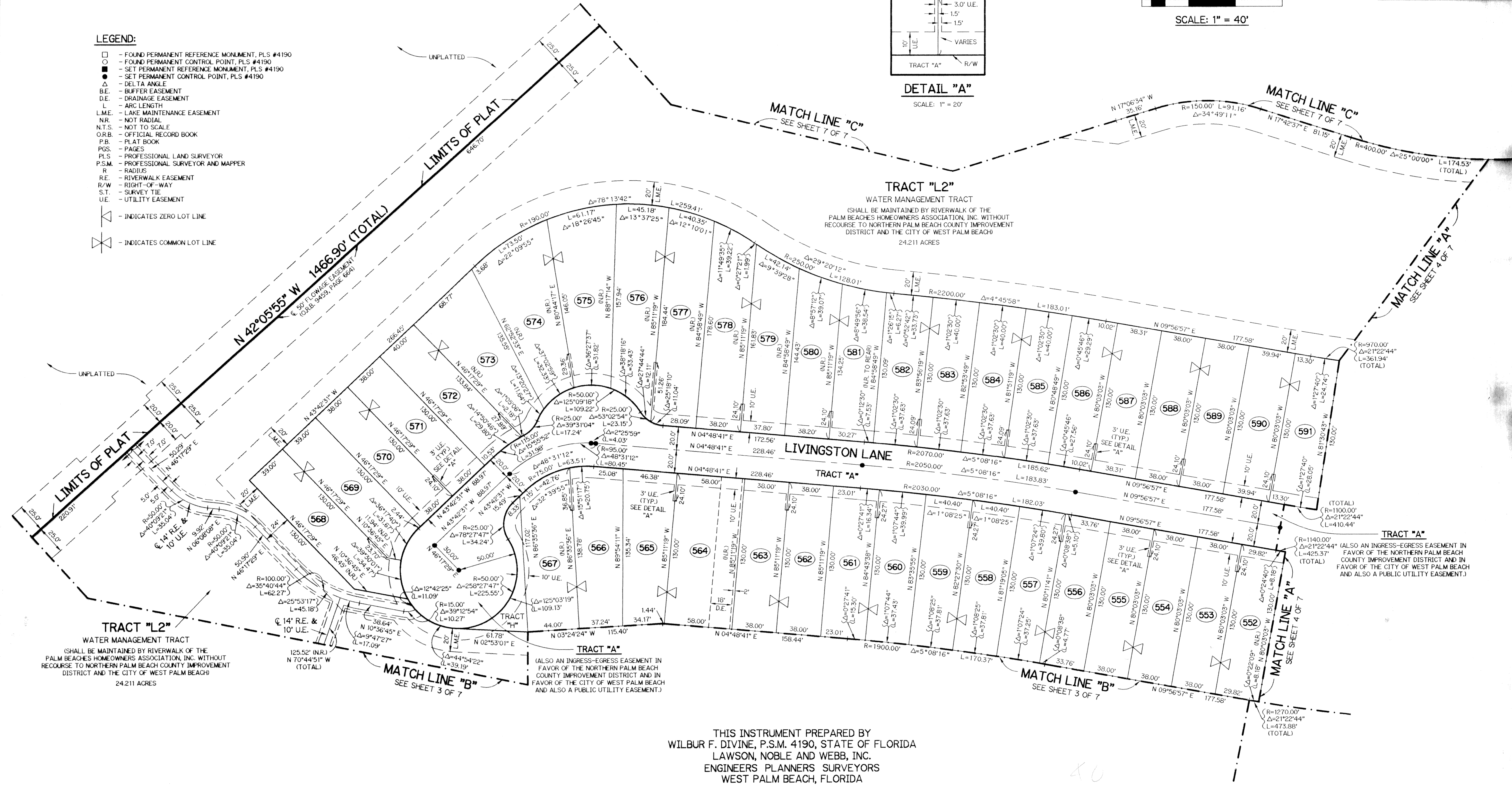
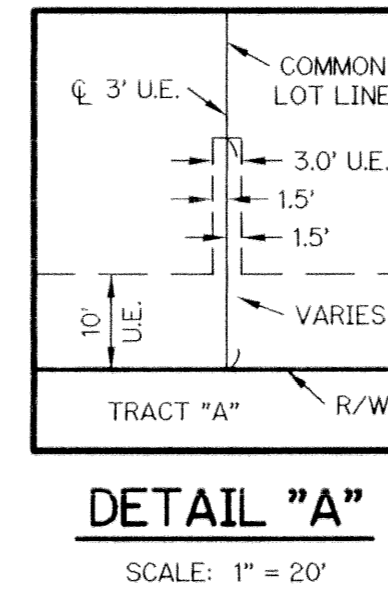


KEY MAP
N.T.S.



LEGEND:

- - FOUND PERMANENT REFERENCE MONUMENT, PLS #4190
 - - FOUND PERMANENT CONTROL POINT, PLS #4190
 - - SET PERMANENT REFERENCE MONUMENT, PLS #4190
 - - SET PERMANENT CONTROL POINT, PLS #4190
 - Δ - DELTA ANGLE
 - B.E. - BUFFER EASEMENT
 - D.E. - DRAINAGE EASEMENT
 - L - ARC LENGTH
 - L.M.E. - LAKE MAINTENANCE EASEMENT
 - NR - NOT RADIAL
 - N.T.S. - NOT TO SCALE
 - O.R.B. - OFFICIAL RECORD BOOK
 - P.B. - PLAT BOOK
 - PGS. - PAGES
 - PLS - PROFESSIONAL LAND SURVEYOR
 - P.S.M. - PROFESSIONAL SURVEYOR AND MAPPER
 - R - RADIUS
 - R.E. - RIVERWALK EASEMENT
 - R/W - RIGHT-OF-WAY
 - S.T. - SURVEY TIE
 - U.E. - UTILITY EASEMENT
- INDICATES ZERO LOT LINE
- INDICATES COMMON LOT LINE



SUBDIVISION RIVERWALK PLAT 4
 BOOK 79 PAGE 38
 FLOOD MAP #
 FLOOD ZONE
 ZONING
 QUAD #
 ZIP CODE
 PUD NAME City of West Palm Beach

THIS INSTRUMENT PREPARED BY
 WILBUR F. DIVINE, P.S.M. 4190, STATE OF FLORIDA
 LAWSON, NOBLE AND WEBB, INC.
 ENGINEERS PLANNERS SURVEYORS
 WEST PALM BEACH, FLORIDA